

OPzS Deep Cycle Tubular Flooded Battery

40PzS200

CSBattery OPzS series is flooded Lead Acid battery that adopts Tubular Plate technology to offer high reliability and performance. The Battery is designed and manufactured according to standards and with DIN40736-2/IEC60896-11 positive spine and patent formula of die-casting active material. OPzS series exceeds standard values with more DIN40736-2/IEC60896-11 than 20 years floating design even more suitable for life at 25°C and is cyclic use(PV/solar, traction etc) under extreme operating conditions.

2V
250Ah

Flooded
Technology

Tubular
Plate



Applications

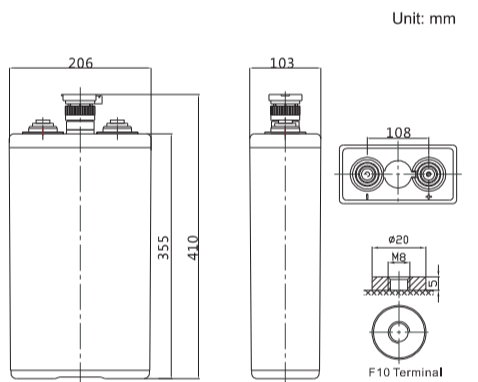
- Solar & Wind Power system
- Nuclear power station
- Telecom backup power supply
- energy saving requirements
Emergency Power System

General Features

- ✓ It can discharge at -40°C~70°C, Charge at 0~50°C
- ✓ Long life expectancy of 20+ years in floating condition
- ✓ Adopts quality silicon nano gel electrolyte
- ✓ Excellent deep discharge recovery capability
- ✓ Deep cycle performance: up to 3300

Dimensions & Weight

Technical Specifications



Unit: mm

| | |
|--------------|-----------------------|
| Length | 103±2mm (4.01 inches) |
| Width | 206±2mm (8.11 inches) |
| Height | 355±2mm (14.0 inches) |
| Total Height | 410±2mm (16.1 inches) |
| Torque Value | 10~12 N*m |

| | |
|------------------------------------|---|
| Cells Per Unit | 1 |
| Voltage Per Unit | 2 |
| Nominal Capacity | 200Ah@10hr-rate to 1.80V per cell @25°C |
| Weight | Without Electrolyte 13.3kg/With Electrolyte 17.6kg |
| Internal Resistance | Approx. 0.95 mΩ |
| Terminal | F10(M8) |
| Max. Discharge Current | 1000A (5 sec) |
| Design Life | 20 years (floating charge) |
| Max. Charging Current | 30.0 A |
| Reference Capacity | C3 162.6AH C5 181.0AH C10 200.0AH C20 242.0AH |
| Float Charging Voltage | 2.23 V~2.25 V @ 25°C Temperature Compensation: -3mV/°C/Cell |
| Cycle Use Voltage | 2.40 V~2.45 V @ 25°C Temperature Compensation: -4mV/°C/Cell |
| Operating Temperature Range | Discharge: -15°C~50°C Charge: 0°C~40°C Storage: -15°C~50°C |
| Normal Operating Temperature Range | 25°C ±5°C |
| Self Discharge | OPzS series is flooded Lead Acid battery . It can be stored for up to 2 years before filling acid. Monthly Self-discharge ratio is less than 3.5% at 20°C. Please charged batteries before using. |
| Container Material | A.B.S. UL94-HB, UL94-V0 Optional. |

Battery Discharge Table

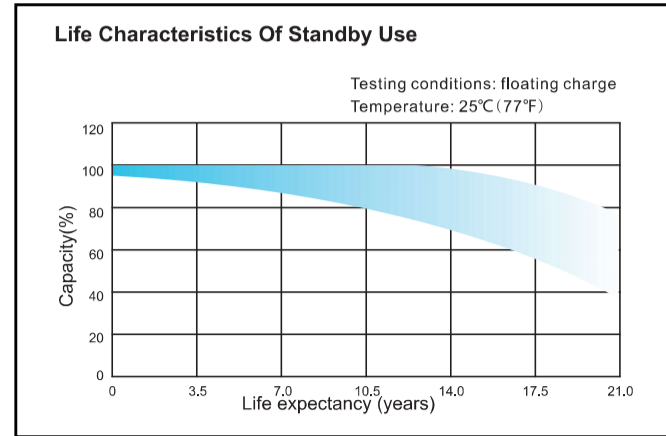
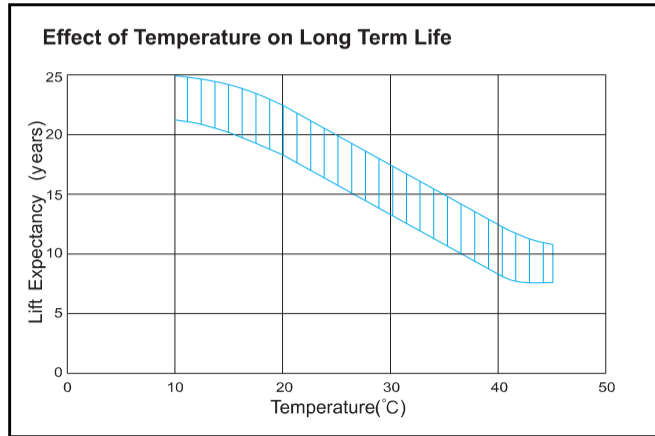
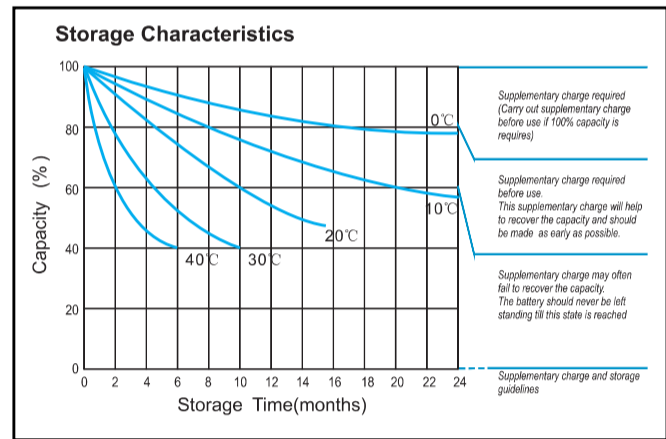
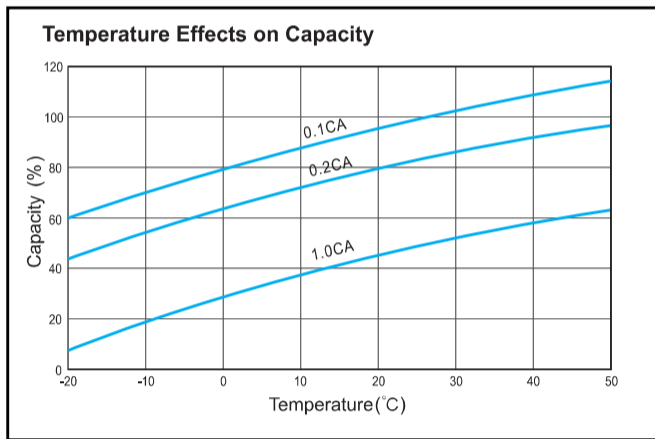
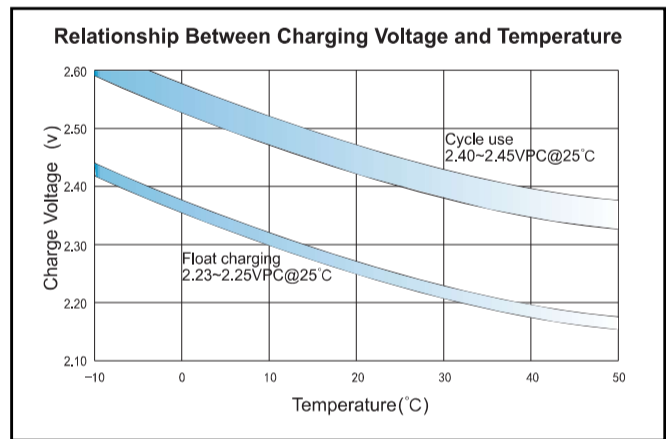
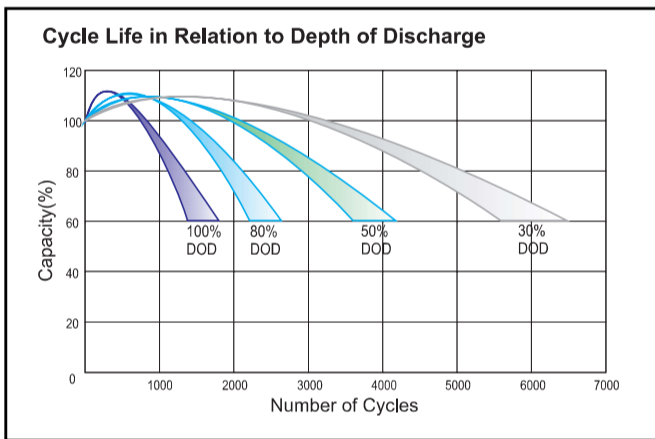
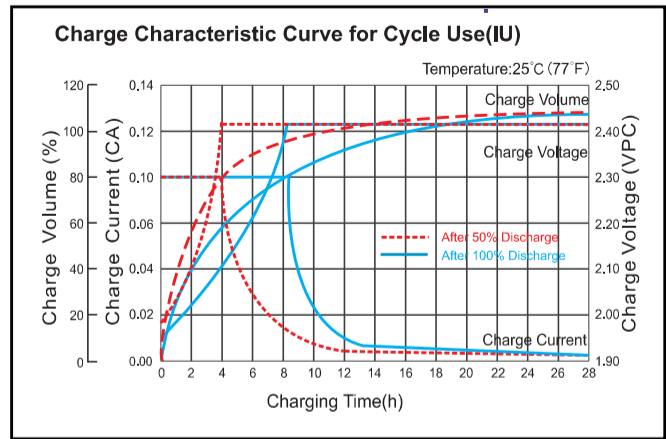
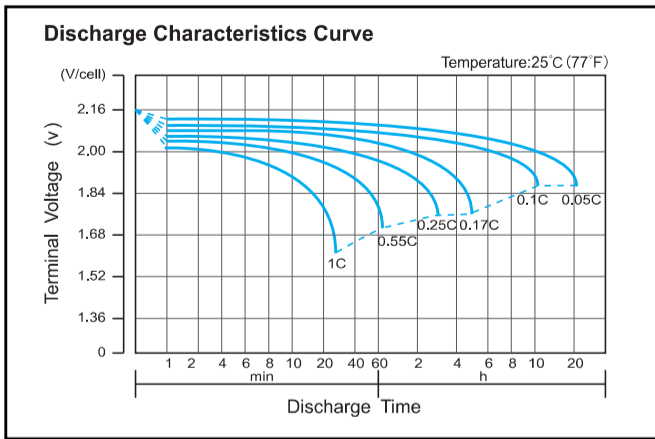
Discharge Constant Current per Cell (Amperes at 25° C)

| F.V/ Time | 30min | 1h | 2h | 3h | 4h | 5h | 6h | 8h | 10h | 20h |
|-----------|-------|-------|------|------|------|------|------|------|------|------|
| 1.60V | 211.0 | 136.1 | 80.6 | 58.7 | 45.3 | 37.9 | 33.1 | 26.0 | 21.9 | 12.6 |
| 1.65V | 204.6 | 128.1 | 78.0 | 57.3 | 44.6 | 37.4 | 32.6 | 25.8 | 21.7 | 12.5 |
| 1.70V | 189.0 | 124.1 | 75.8 | 55.9 | 43.9 | 36.9 | 32.2 | 25.6 | 21.5 | 12.3 |
| 1.75V | 169.6 | 115.9 | 72.5 | 54.2 | 43.1 | 36.2 | 31.6 | 25.2 | 21.1 | 12.1 |
| 1.80V | 153.1 | 103.3 | 67.2 | 50.9 | 41.2 | 34.6 | 30.2 | 24.0 | 20.0 | 11.5 |
| 1.85V | 127.7 | 88.6 | 60.1 | 46.2 | 38.1 | 32.0 | 28.0 | 22.4 | 18.7 | 10.8 |

Discharge Constant Power per Cell (Watts at 25° C)

| F.V/ Time | 30min | 1h | 2h | 3h | 4h | 5h | 6h | 8h | 10h | 20h |
|-----------|-------|-------|-------|-------|------|------|------|------|------|------|
| 1.60V | 357.0 | 232.2 | 147.3 | 110.0 | 87.5 | 73.5 | 64.2 | 51.0 | 43.5 | 25.0 |
| 1.65V | 351.0 | 222.3 | 143.4 | 107.8 | 86.4 | 72.7 | 63.6 | 50.6 | 43.3 | 24.9 |
| 1.70V | 333.3 | 220.1 | 139.9 | 105.6 | 85.0 | 71.7 | 63.0 | 50.1 | 42.9 | 24.7 |
| 1.75V | 307.3 | 210.7 | 135.5 | 103.2 | 83.9 | 70.7 | 61.9 | 49.5 | 42.3 | 24.3 |
| 1.80V | 285.1 | 193.0 | 127.1 | 97.8 | 80.4 | 67.8 | 59.5 | 47.6 | 40.5 | 23.3 |
| 1.85V | 244.4 | 170.0 | 116.1 | 89.9 | 74.5 | 62.9 | 55.4 | 44.9 | 38.2 | 22.0 |

Performance Characteristics



Note: The above data are average values, and can be obtained within 3 charge/discharge cycles. These are not minimum values. Cell and battery designs/specifications are subject to modification without notice. Contact **CSBattery** for the latest information.

Add: Building Evolution, Xingdong industry Park, NO.61, Liuxian 2nd Road, Baoan, Shenzhen, China.

Tel: +86-755-29123661 Email: Sales@CSBattery.cn, Support@CSBattery.cn

Website: www.CSBattery.cn